

# PONDEROSA PLUS

68'-0"

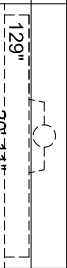
64'-0"

18'-4 1/2"

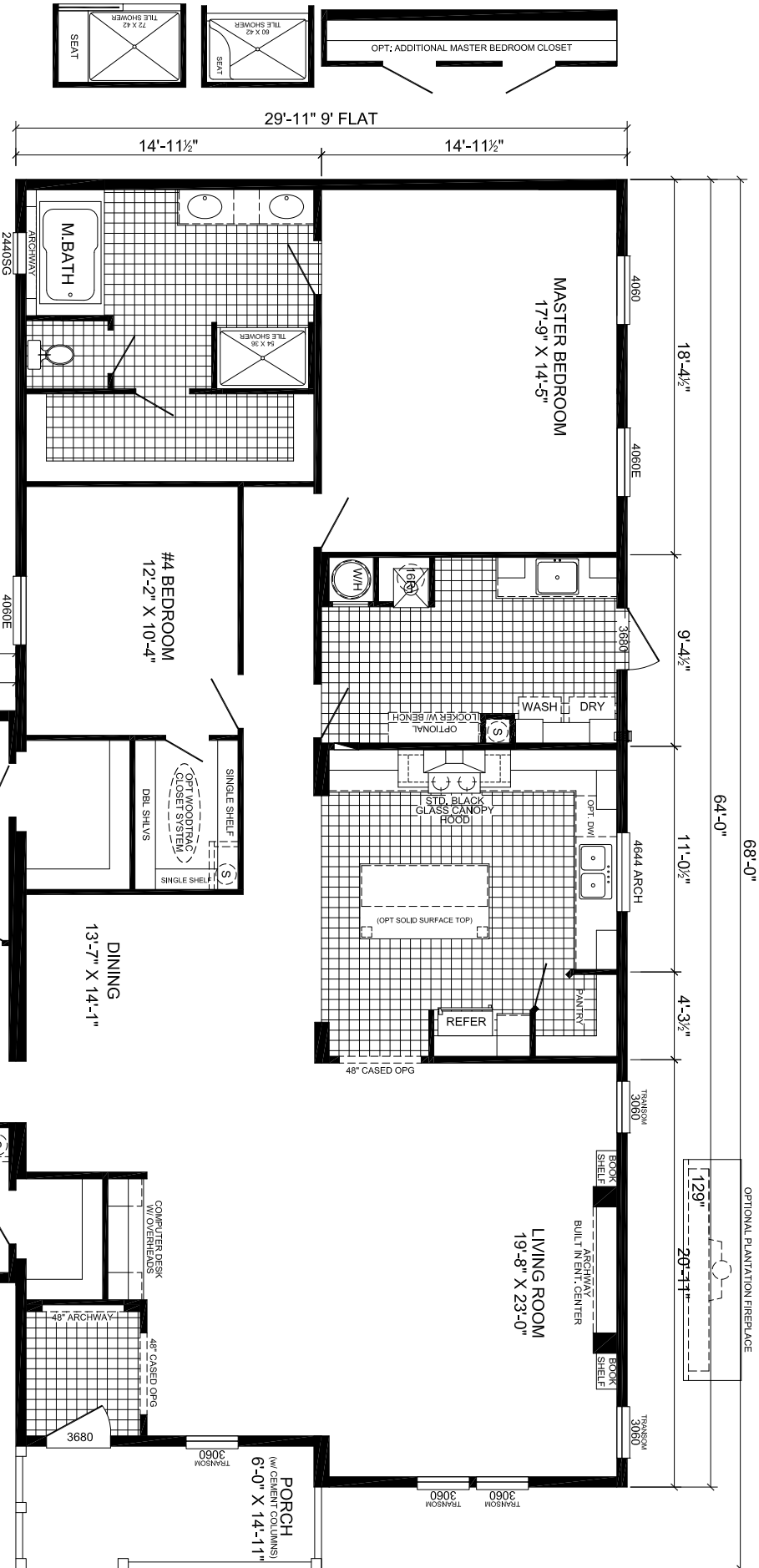
9'-4 1/2"

11'-0 1/2"

4'-3 1/2"



OPTIONAL PLANTATION FIREPLACE



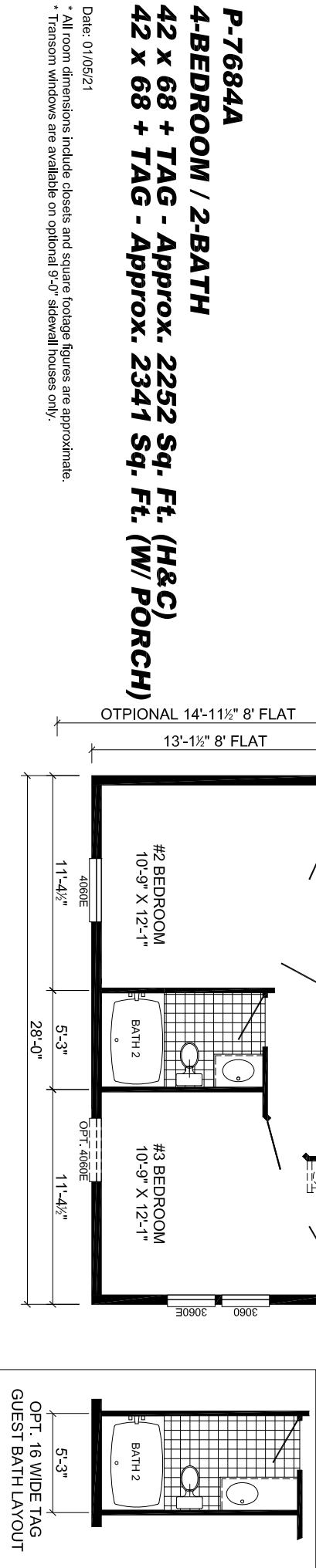
29'-11" 9" FLAT

14'-11 1/2"

14'-11 1/2"

OPTIONAL 14'-11 1/2" 8' FLAT

13'-1 1/2" 8' FLAT



OPT. 16 WIDE TAG GUEST BATH LAYOUT

## P-7684A

### 4-BEDROOM / 2-BATH

42 x 68 + TAG - Approx. 2252 Sq. Ft. (H&C)  
 42 x 68 + TAG - Approx. 2341 Sq. Ft. (W/ PORCH)

Date: 01/05/21

\* All room dimensions include closets and square footage figures are approximate.

\* Transom windows are available on optional 9'-0" sidewall houses only.