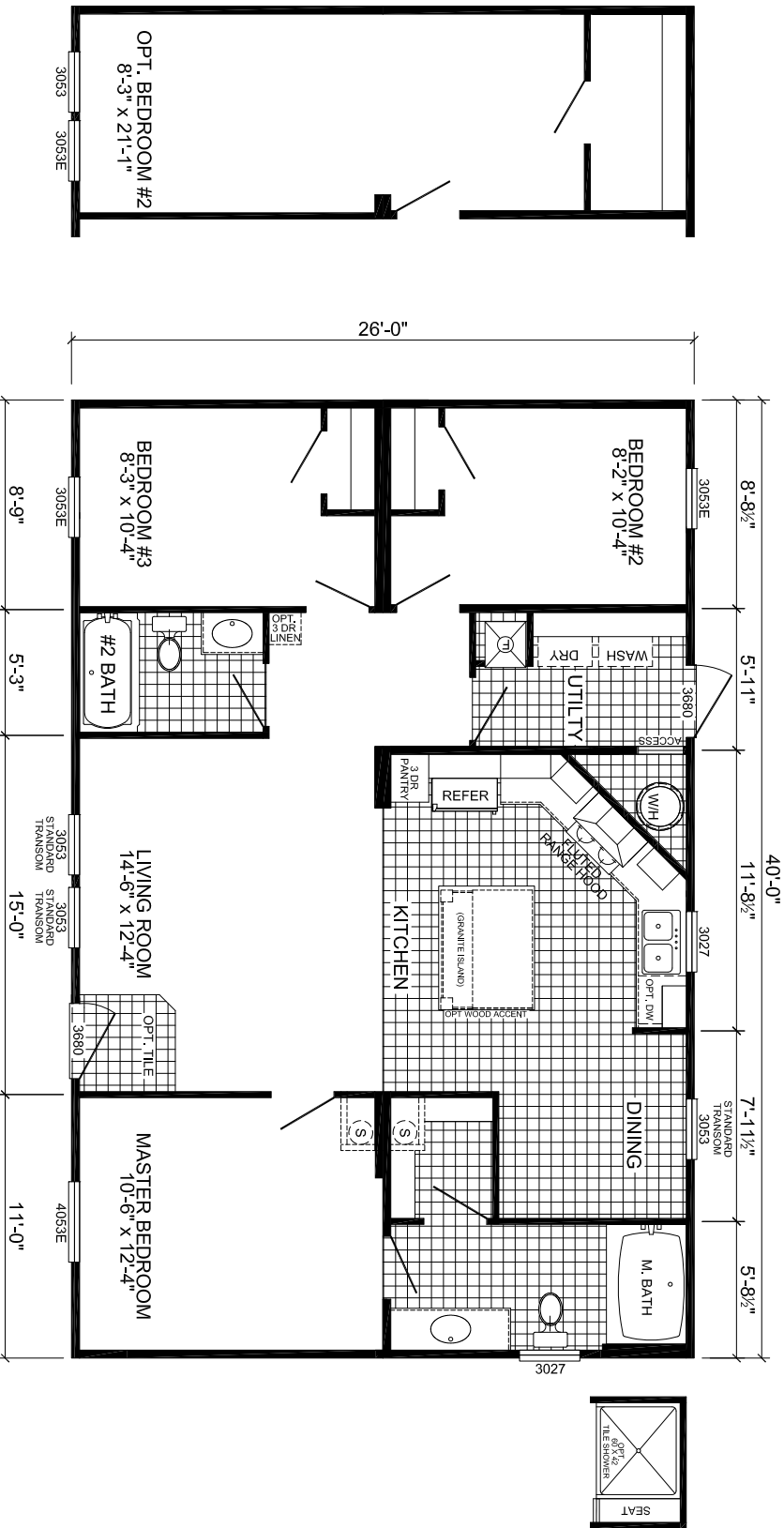
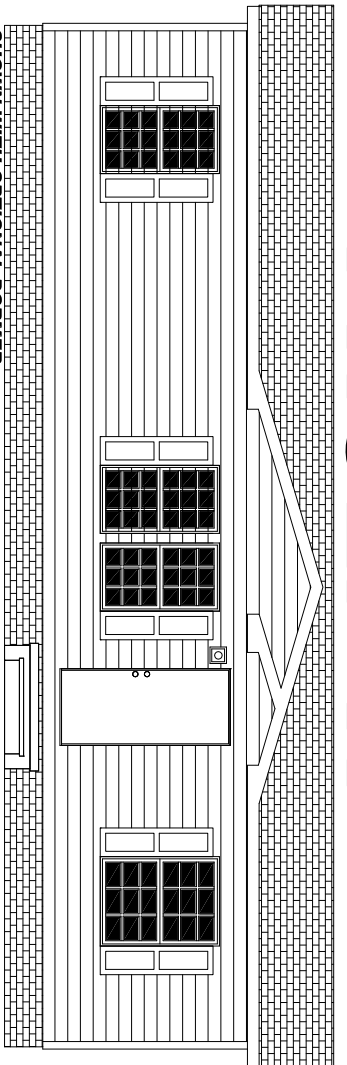


# PHOENIX



**M-2403D-OAK**  
**3-BEDROOM / 2-BATH**  
**28 x 44 - Approx. 1040 Sq. Ft.**

Date: 11/14/19

\* All room dimensions include closets and square footage figures are approximate.  
\* Transom windows are available on optional 9'-0" sidewall houses only.  
\* Live Oak Homes reserves the right to modify product offering at any time.