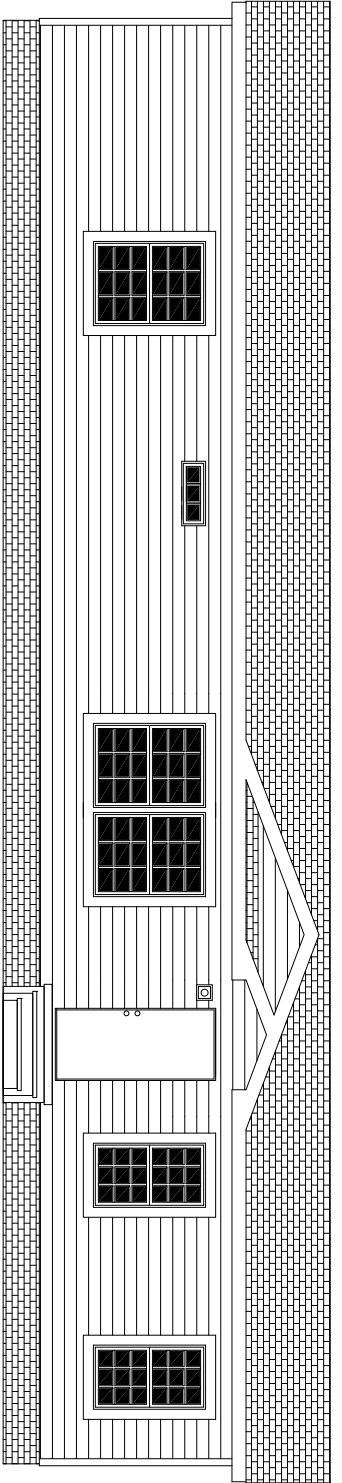
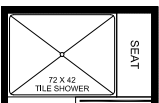
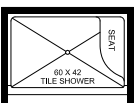
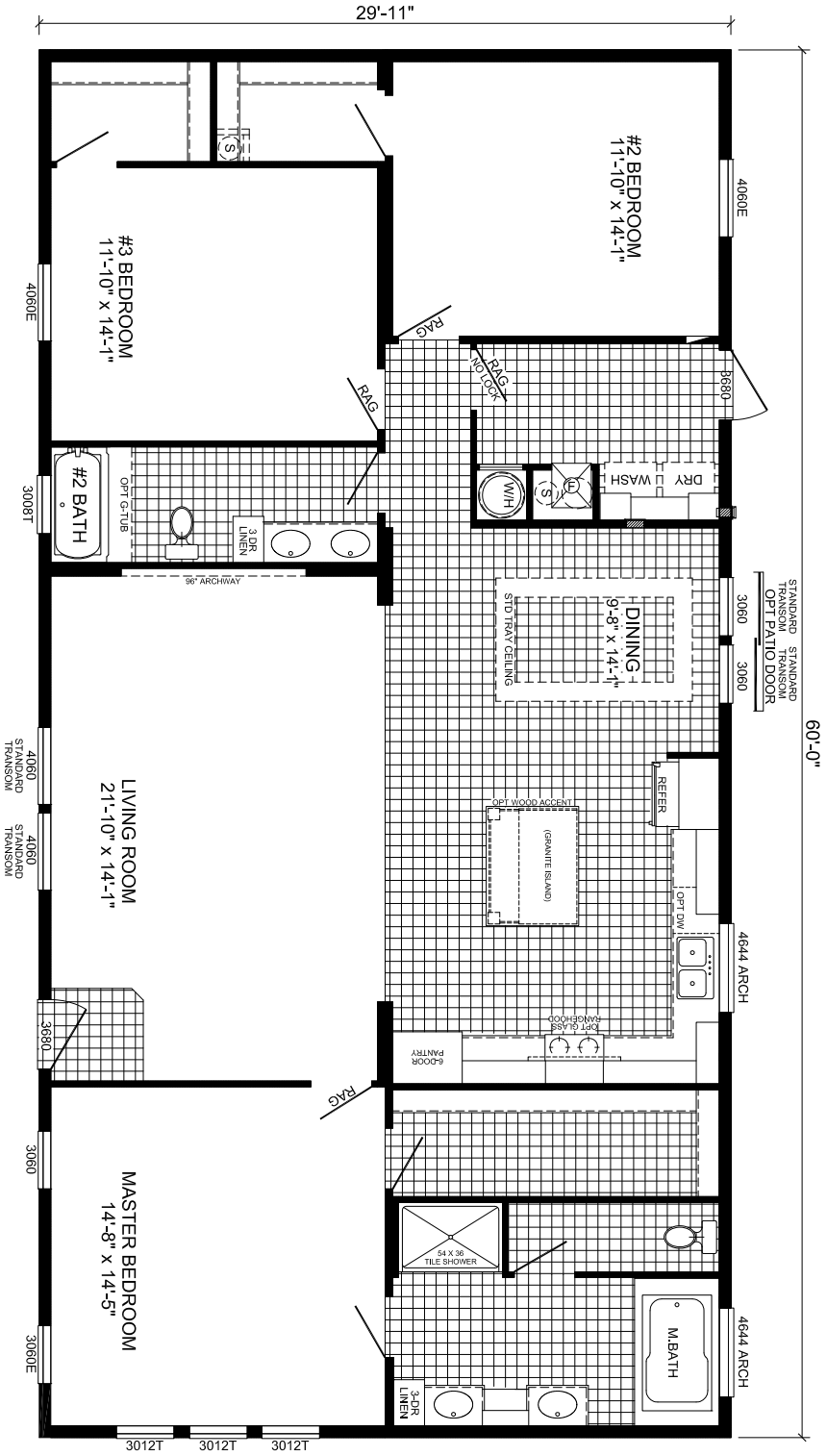


# OXFORD



## FRONT ELEVATION



**P-36030**  
**3-BEDROOM / 2-BATH**  
**32 X 64 - Approx. 1795 Sq. Ft.**  
 Date: 02/15/21  
 \* All room dimensions include closets and square footage figures are approximate.  
 \*\* Transoms are available on optional 9'-0" sidewall houses only.