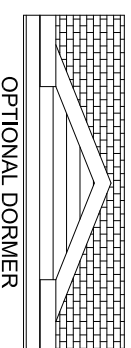
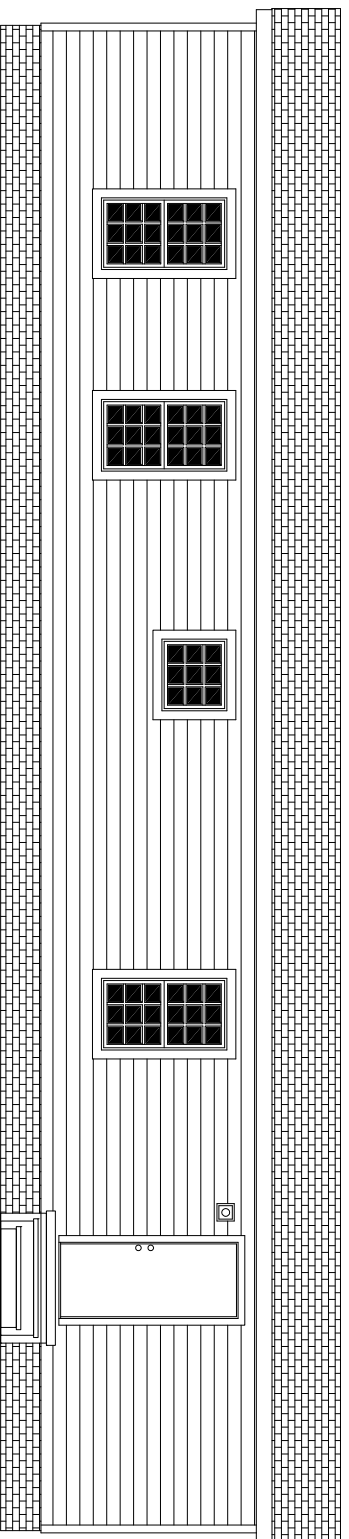


SLINGSHOT

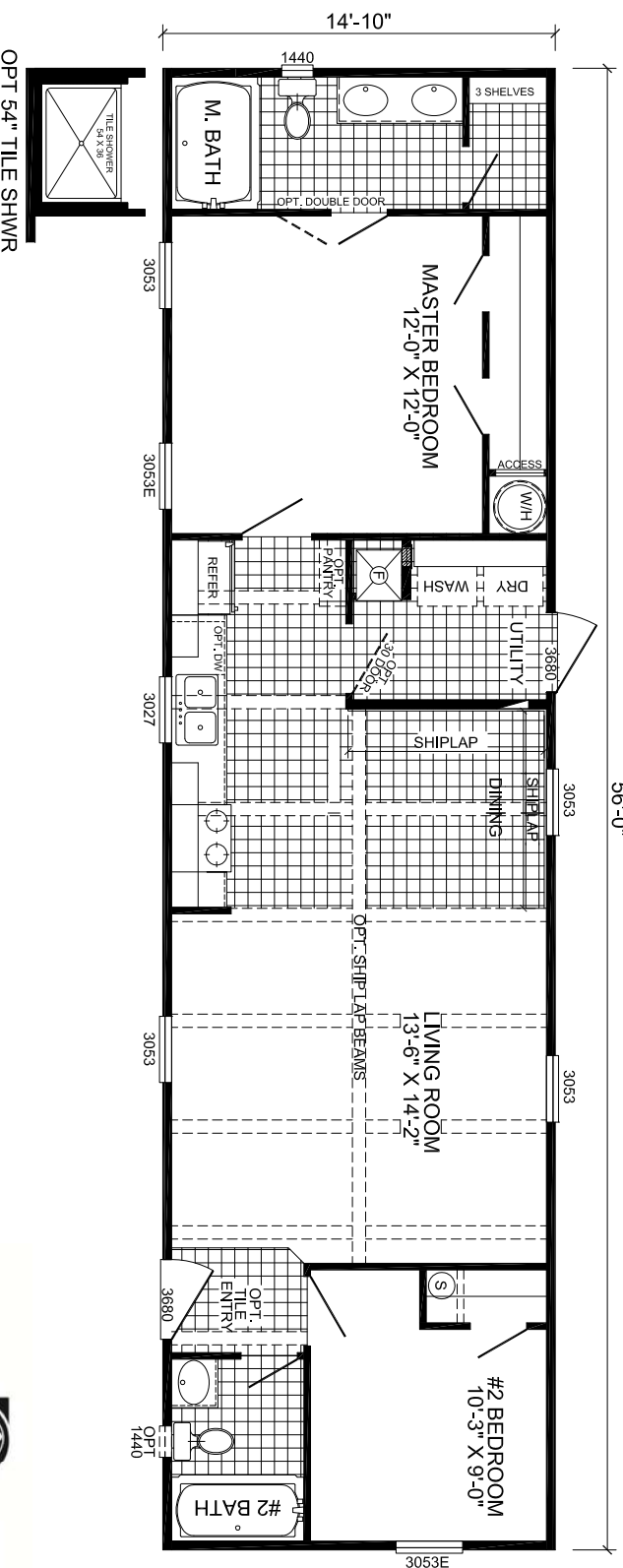


OPTIONAL DORMER



OPT. 30" X 60" SHWR

56'-0"



OPT 54" TILE SHWR

S-5562B-SIG-OAK

2-BEDROOM / 2-BATH

16 X 60 - Approx. 830 Sq. Ft.

Date: 11/12/19

* All room dimensions include closets and square footage figures are approximate.
 * Live Oak Homes reserves the right to modify product offering at any time.

