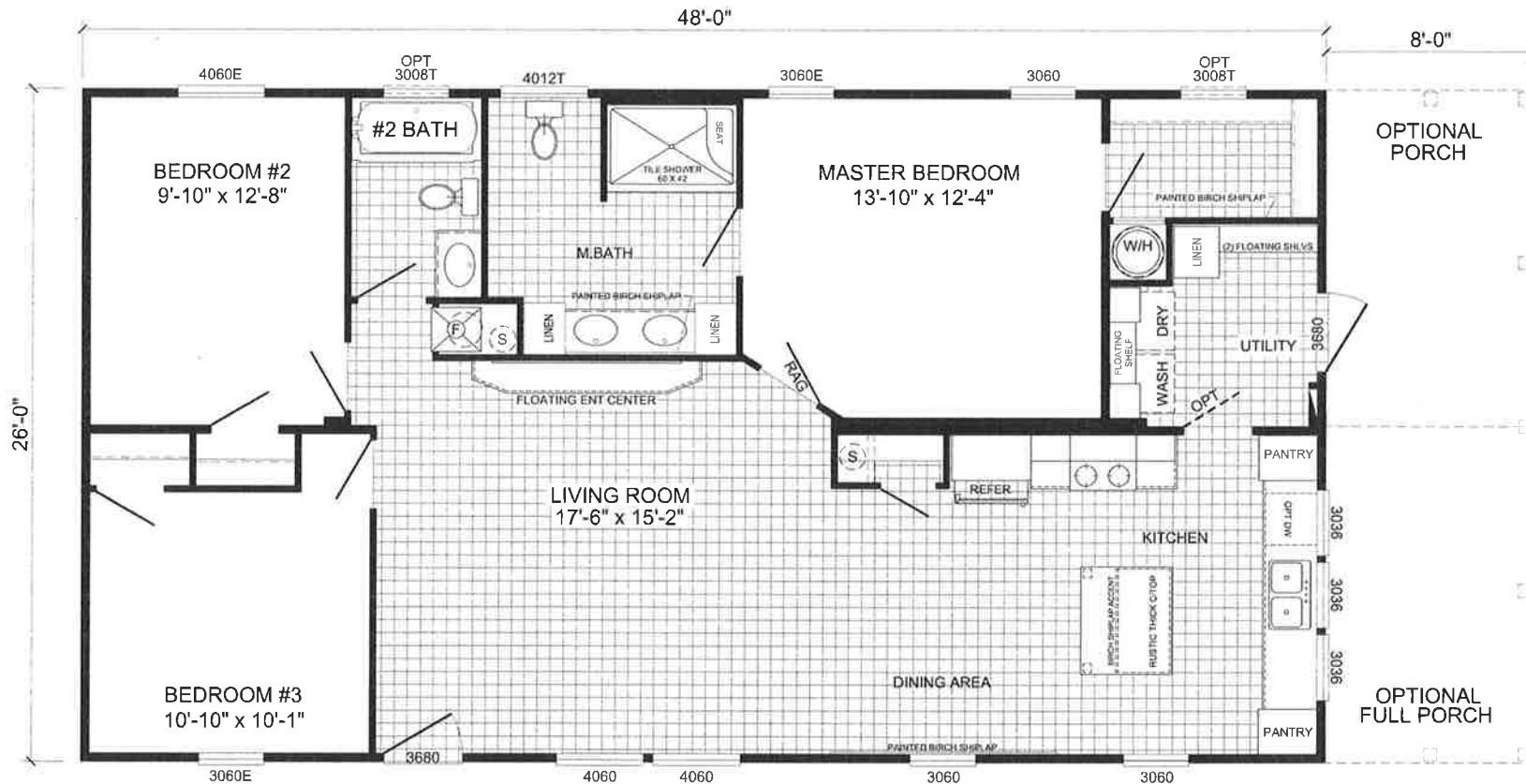


**DORMER SHOWN IS AN OPTION**



**H-2483N-PS**  
**3-BEDROOM / 2-BATH**  
**28 x 52 - Approx. 1260 Sq. Ft.**

Date: 09/01/22

\* All room dimensions include closets and square footage figures are approximate.

\* Transom windows are available on optional 9'-0" sidewall houses only.